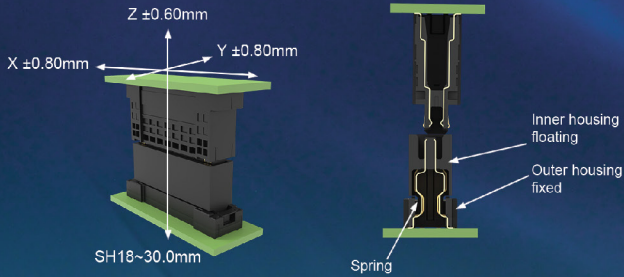


# FloatCombo™

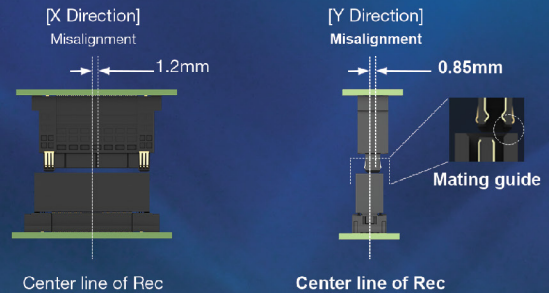
High-Speed, High-Current Floating Board-to-Board Connectors with Power Pin

## High Floating Allowance



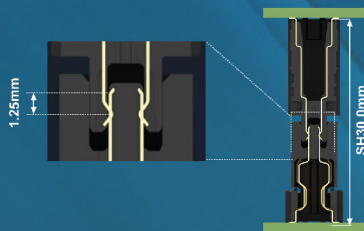
- Floating features reduce stress generated during use, ensuring long-term reliability
- SH≤15mm: X/Y ±0.60mm & Z: ±0.50mm, SH18~30mm: X/Y ±0.80mm & Z: ±0.60mm

## Large Mating Guide



- Enables easier mating when center lines are not perfectly aligned with each other. Blind-mating is possible
- Supports automatic assembly, especially when multiple floating connectors are used on the same board
- SH≤15mm: X:±0.7mm & Y: ±0.85mm, SH18~30mm: X:±1.2mm & Y: ±0.85mm

## Large Mating Guide



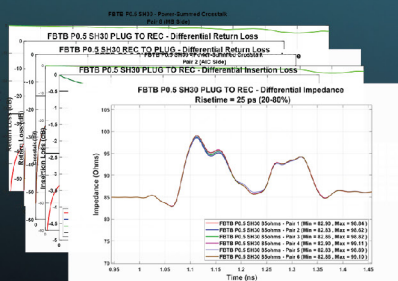
- Long wiping length ensures reliable contact between receptacle and plug
- SH≤15mm: 1.28mm, SH18~30mm: 1.25mm

## Versatility



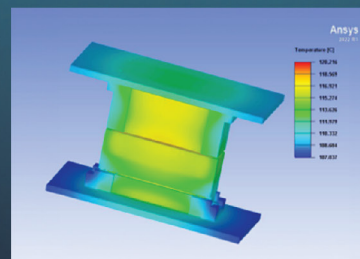
- Stacking heights : 8~15mm
- Stacking heights : 18~30mm

## High-Speed



- Supports high-speed data rate up to PCIe Gen4 (85ohm).
- Meets general differential pair impedance resistance 100ohm
- Suitable for high data, high-speed transmission applications

## High Current Transmission



- Signal PIN can pass 0.5A/pin
- Power PIN can pass 5A/pin
- Suitable for products that need to supply high current separately and saving pins



Learn more at [www.amphenol-cs.com/floating-board-to-board-connectors](http://www.amphenol-cs.com/floating-board-to-board-connectors)



/AmphenolCS



/Amphenol-CS



/AmphenolCS



/AmphenolCS



## FloatCombo™ Stack Height 8.0mm

Plug	Receptacle	Pitch	Pin count	Dielectric withstanding voltage	Vol & Current rating	Contact resistance	Floating Allowance	Transmission Rate	Configurations	Durability
B324-1B7L1-112**E100	B329-1B7L1-112**E100	0.5mm	"60/100/140p (20 ~ 140)"	Signal 250V, Power 600V	50V, Signal 0.5A/pin, Power 5A*4pin	Signal PIN<60 mΩ, Power PIN<20mΩ	X,Y±0.6mm; Z±0.5mm	10.0 Gbps	Parallel, SMT	100cycles



## FloatCombo™ Stack Height 10.0mm

Plug	Receptacle	Pitch	Pin count	Dielectric withstanding voltage	Vol & Current rating	Contact resistance	Floating Allowance	Transmission Rate	Configurations	Durability
B322-1B7L1-112**E100	B329-1B7L1-112**E100	0.5mm	"40/60/80/100p (20 ~ 140)"	Signal 250V, Power 600V	50V, Signal 0.5A/pin, Power 5A*4pin	Signal PIN<60 mΩ, Power PIN<20mΩ	X,Y±0.6mm; Z±0.5mm	10.0 Gbps	Parallel, SMT	100cycles



## FloatCombo™ Stack Height 13.0mm

Plug	Receptacle	Pitch	Pin count	Dielectric withstanding voltage	Vol & Current rating	Contact resistance	Floating Allowance	Transmission Rate	Configurations	Durability
B329-1B7L1-112**E100	B344-1B7L1-112**E100	0.5mm	"100p (20 ~ 140)"	Signal 250V, Power 600V	50V, Signal 0.5A/pin, Power 5A*4pin	Signal PIN<60 mΩ, Power PIN<20mΩ	X,Y±0.6mm; Z±0.5mm	10.0 Gbps	Parallel, SMT	100cycles



## FloatCombo™ Stack Height 15.0mm

Plug	Receptacle	Pitch	Pin count	Dielectric withstanding voltage	Vol & Current rating	Contact resistance	Floating Allowance	Transmission Rate	Configurations	Durability
B326-1B7L1-112**E100	B329-1B7L1-112**E100	0.5mm	"60/80/100/120p (20 ~ 140p)"	Signal 250V, Power 600V	50V, Signal 0.5A/pin, Power 5A*4pin	Signal PIN<60 mΩ, Power PIN<20mΩ	X,Y±0.6mm; Z±0.5mm	10.0 Gbps	Parallel, SMT	100cycles



## FloatCombo™ Stack Height 20.0mm

Plug	Receptacle	Pitch	Pin count	Dielectric withstanding voltage	Vol & Current rating	Contact resistance	Floating Allowance	Transmission Rate	Configurations	Durability
B06P-3G1B1-AA1**111	B04R-3J1B1-AA1**1110	0.5mm	"20/60/80/100/120p (20 ~ 120p)"	Signal 250V, Power 600V	50V, Signal 0.5A/pin, Power 5A*4pin	Signal PIN<70 mΩ, Power PIN<20mΩ	X/Y±0.8mm; Z±0.6mm	PCIe Gen4 16Gbps	Parallel, SMT+PIP	100cycles



## FloatCombo™ Stack Height 21.0mm

Plug	Receptacle	Pitch	Pin count	Dielectric withstanding voltage	Vol & Current rating	Contact resistance	Floating Allowance	Transmission Rate	Configurations	Durability
B324-1B7L1-112**E100	B04R-3J1B1-AA1**1110	0.5mm	"100p (20 ~ 120p)"	Signal 250V, Power 600V	50V, Signal 0.5A/pin, Power 5A*4pin	Signal PIN<70 mΩ, Power PIN<20mΩ	X/Y±0.8mm; Z±0.6mm	PCIe Gen4 16Gbps	Parallel, SMT+PIP	100cycles



## FloatCombo™ Stack Height 25.0mm

Plug	Receptacle	Pitch	Pin count	Dielectric withstanding voltage	Vol & Current rating	Contact resistance	Floating Allowance	Transmission Rate	Configurations	Durability
B07P-3K1B1-AA1**1110	B04R-3J1B1-AA1**1110	0.5mm	"60/100/120p (20 ~ 120p)"	Signal 250V, Power 600V	50V, Signal 0.5A/pin, Power 5A*4pin	Signal PIN<70 mΩ, Power PIN<20mΩ	X/Y±0.8mm; Z±0.6mm	PCIe Gen4 16Gbps	Parallel, SMT+PIP	100cycles



## FloatCombo™ Stack Height 30.0mm

Plug	Receptacle	Pitch	Pin count	Dielectric withstanding voltage	Vol & Current rating	Contact resistance	Floating Allowance	Transmission Rate	Configurations	Durability
B04P-3J1B1-AA1**1110	B04R-3J1B1-AA1**1110	0.5mm	"60/80/100/120p (20 ~ 120p)"	Signal 250V, Power 600V	50V, Signal 0.5A/pin, Power 5A*4pin	Signal PIN<70 mΩ, Power PIN<20mΩ	X/Y±0.8mm; Z±0.6mm	PCIe Gen4 16Gbps	Parallel, SMT+PIP	100cycles